

Lignano Sabbiadoro

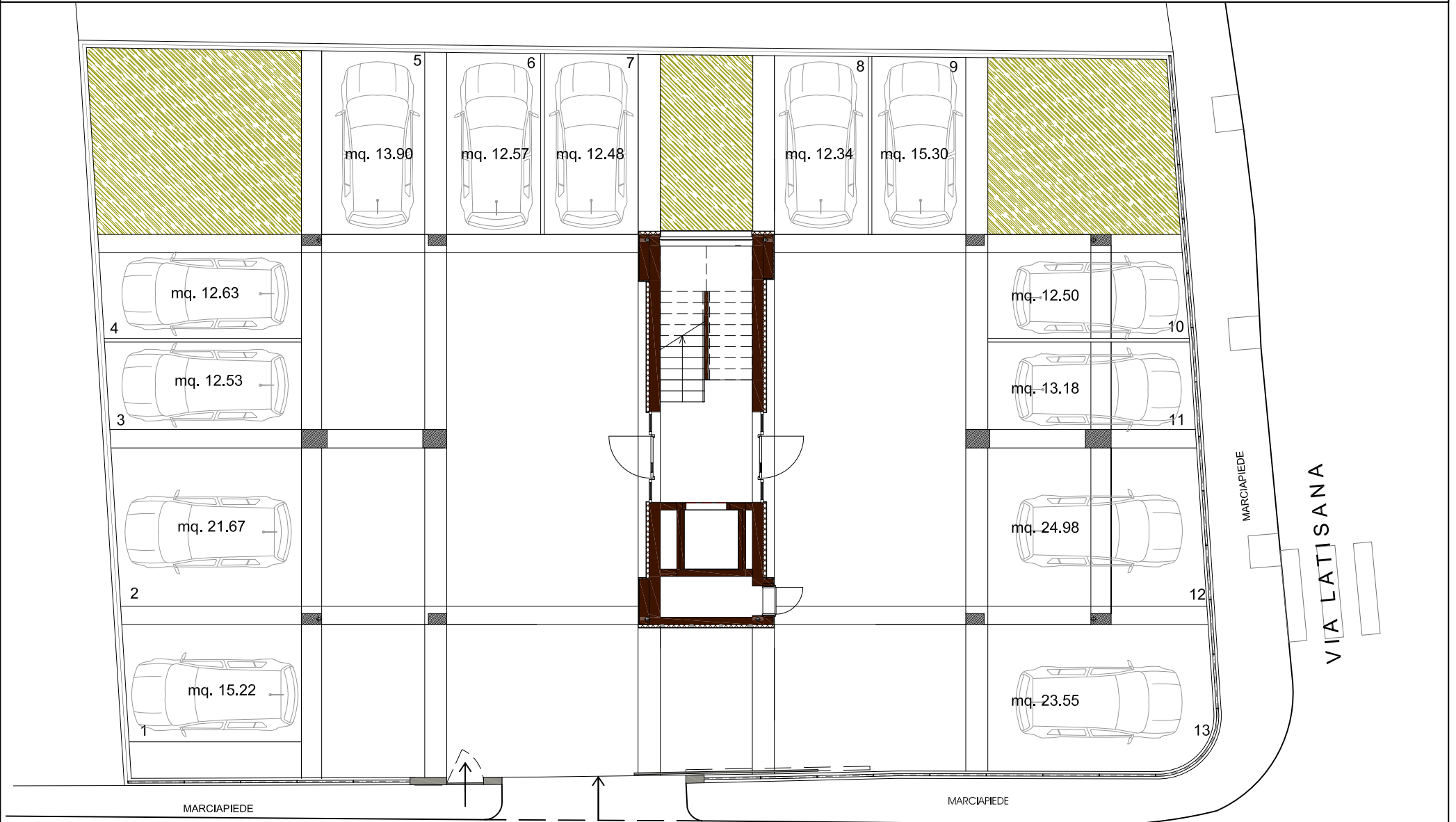
UNATOWER residence



Bioedilizia "Un futuro sostenibile"

ARCO
STUDIO DI ARCHITETTURA

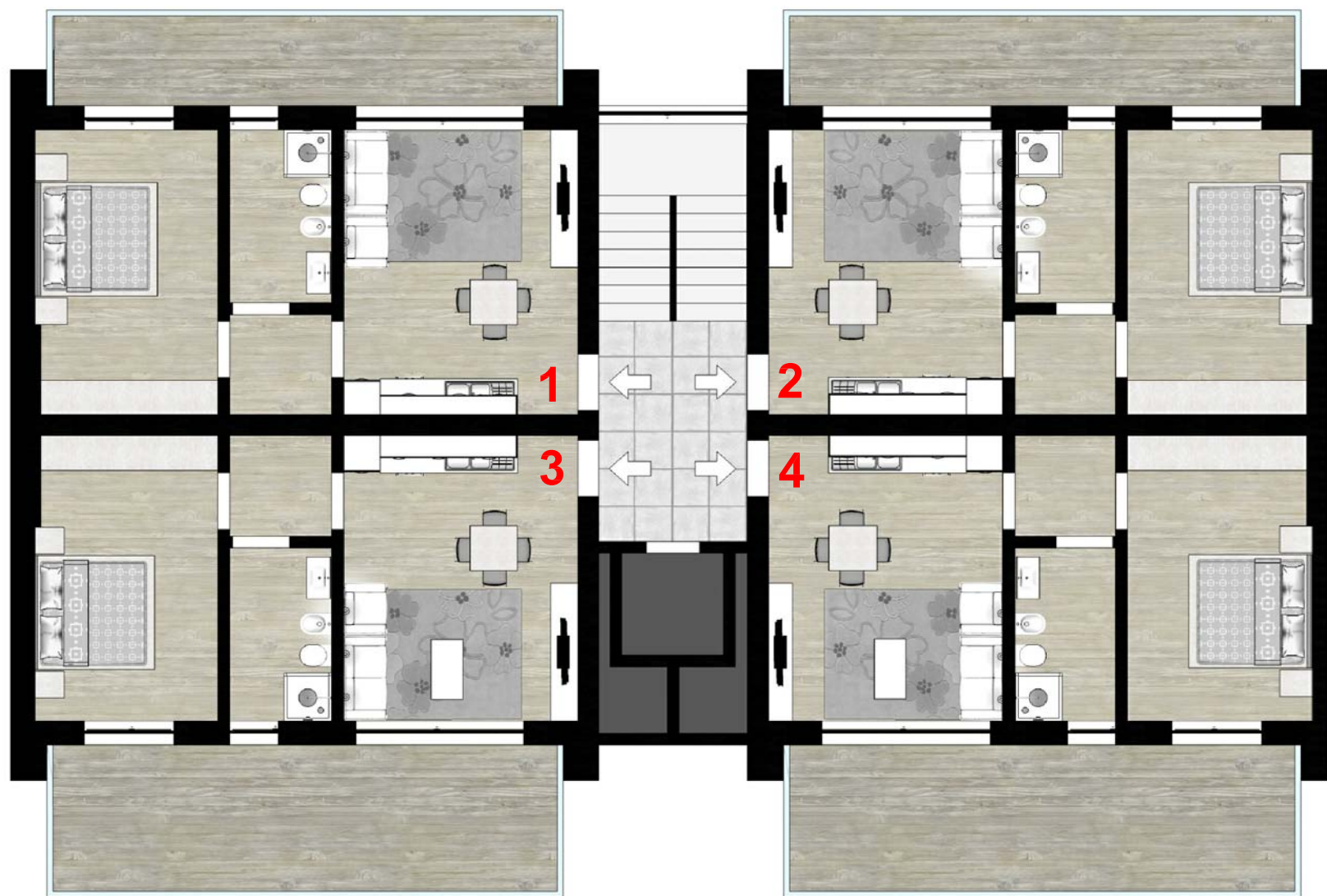
PIANO TERRA



PARCHEGGI n° 13:
- Stalli mq. 203.00
- Area di manovra mq. 234.00

PARTI COMUNI
mq. 28.00

PIANO PRIMO



UNITA' 1 - 2:
- Appartamento mq. 52.00
- Terrazzo mq. 18.00

PARTI COMUNI
mq. 31.00

UNITA' 3 - 4:
- Appartamento mq. 52.00
- Terrazzo mq. 23.00

PIANO SECONDO



UNITA' 5:
- Appartamento mq. 99.00
- Terrazzo mq. 47.00

PARTI COMUNI
mq. 27.00

UNITA' 6:
- Appartamento mq. 99.00
- Terrazzo mq. 47.00

PIANO TERZO



UNITA' 7:
- Appartamento mq. 99.00
- Terrazzo mq. 47.00

PARTI COMUNI
mq. 27.00

UNITA' 8:
- Appartamento mq. 99.00
- Terrazzo mq. 47.00

PIANO QUARTO

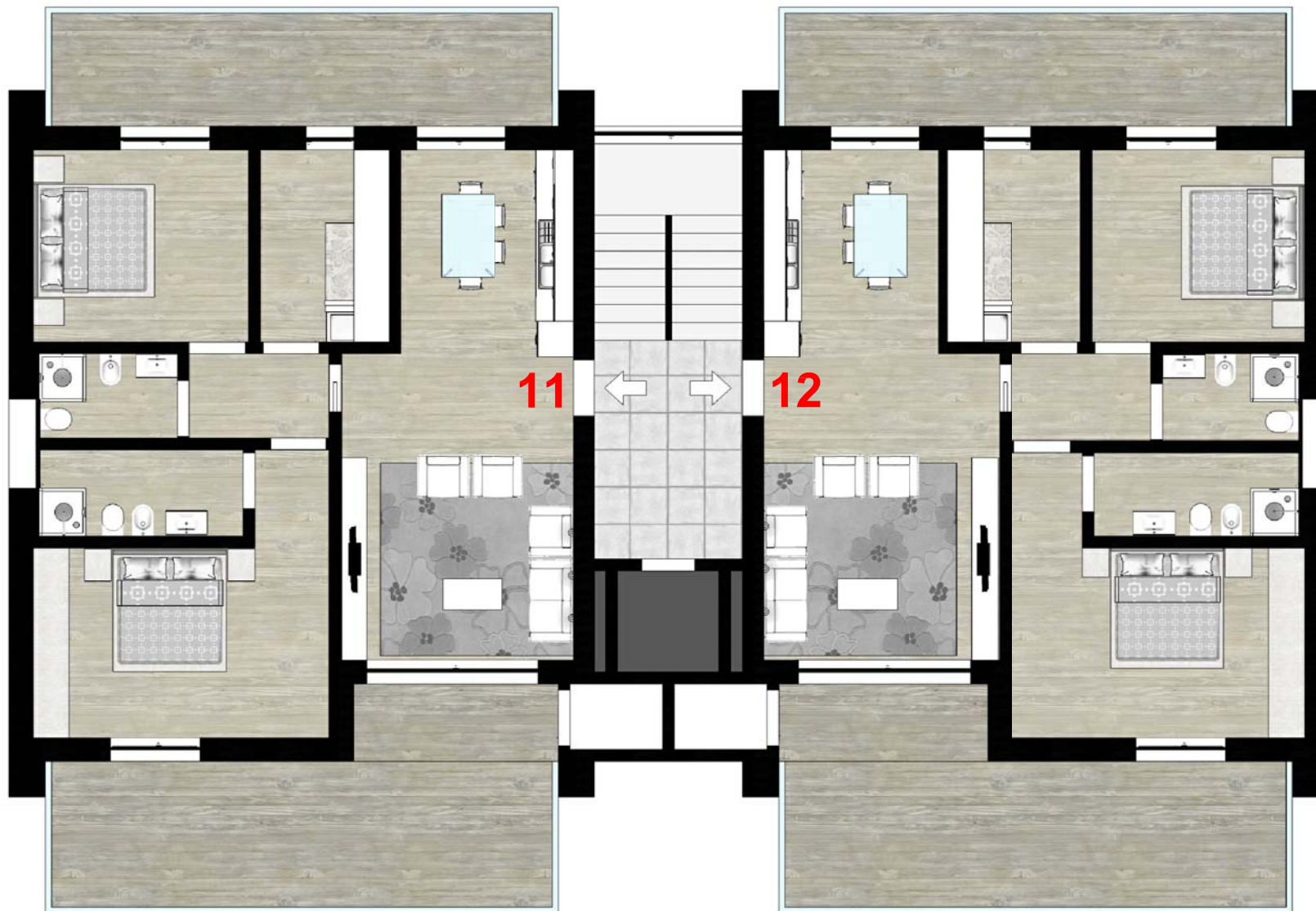


UNITA' 9:
- Appartamento mq. 99.00
- Terrazzo mq. 47.00

PARTI COMUNI
mq. 27.00

UNITA' 10:
- Appartamento mq. 99.00
- Terrazzo mq. 47.00

PIANO QUINTO

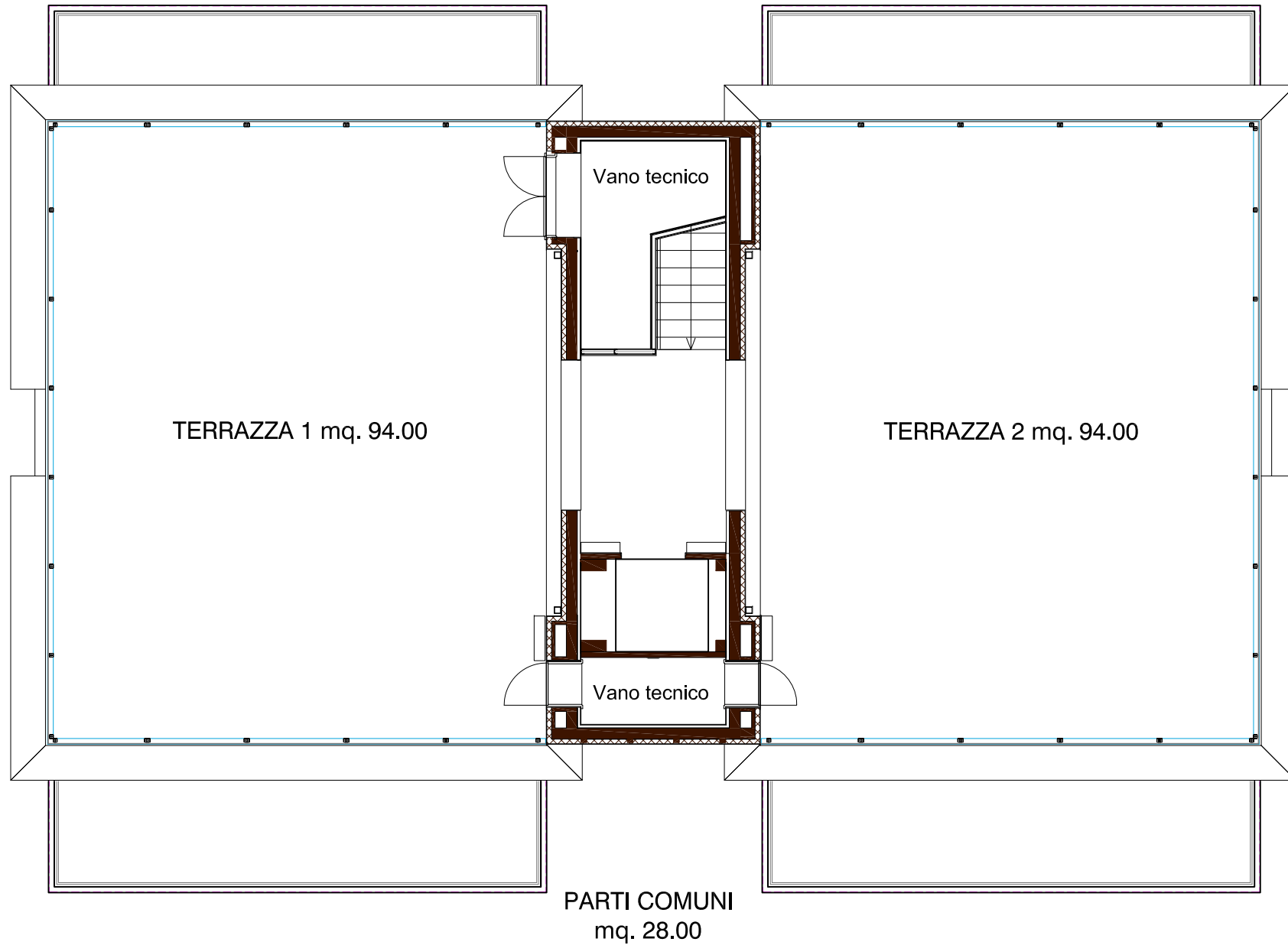


UNITA' 11:
- Appartamento mq. 99.00
- Terrazzo mq. 47.00

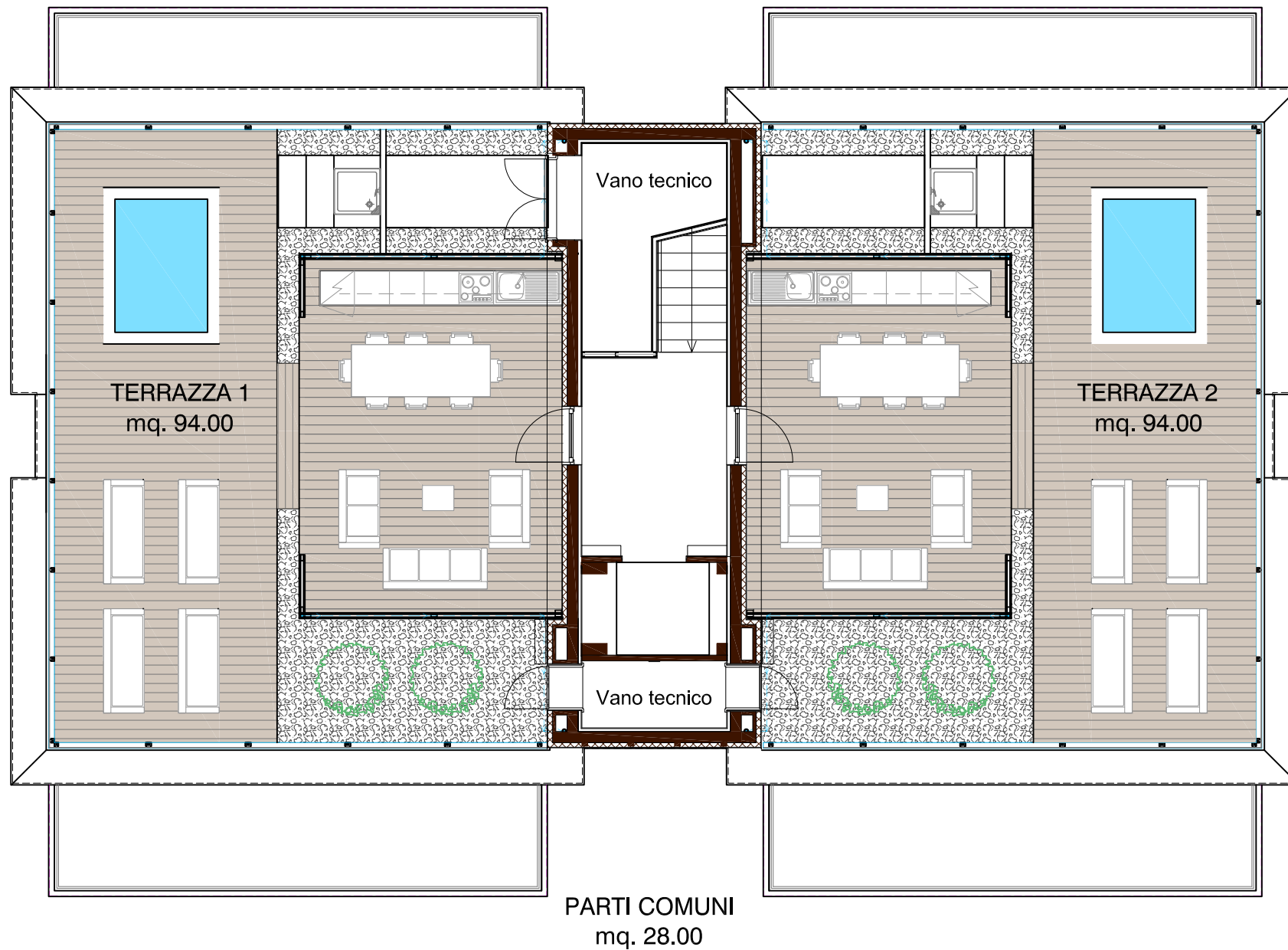
PARTI COMUNI
mq. 27.00

UNITA' 12:
- Appartamento mq. 99.00
- Terrazzo mq. 47.00

PIANO SESTO



SISTEMAZIONE PIANO SESTO





Viste interne